

# MONTHLY MEMBERSHIP PROGRESS REPORT

LOCATION ILLINOIS

District 1 CS

Results as of: 4/30/2023

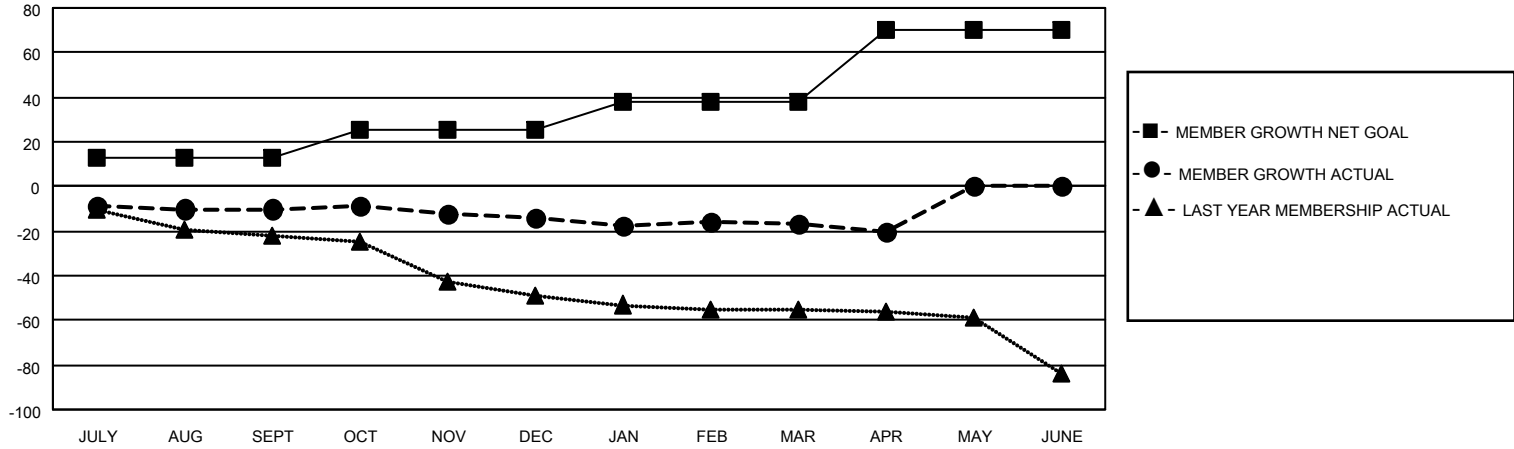
Clubs			
RESULTS FOR 2022-2023			
QUARTER	NEW CLUB GOAL	NEW CLUBS	DROPPED CLUBS
JULY/AUG/SEPT	0	0	1
OCT/NOV/DEC	0	0	0
JAN/FEB/MAR	0	0	0
APR/MAY/JUNE	1	0	0

Members			
RESULTS FOR 2022-2023			
QUARTER	MEMBER GROWTH NET GOAL	MEMBER GROWTH ACTUAL	DROPPED MEMBERS ACTUAL (including transfers)
JULY/AUG/SEPT	13	15	21
OCT/NOV/DEC	12	3	7
JAN/FEB/MAR	13	6	8
APR/MAY/JUNE	32	1	4

**GOALS AND ACTUAL NEW CLUBS CUMULATIVE**



**GOALS AND ACTUAL MEMBERS CUMULATIVE**



**DROPPED CLUBS: 1**

12 CLUBS OF 24 ADDED 1 OR MORE NEW MEMBERS

**GENDER DISTRIBUTION**

MALE	410 (77.21%)
FEMALE	121 (22.79%)
NON BINARY	0 (0.00%)
PREFER NOT TO ANSWER	0 (0.00%)

**DROPPED MEMBERS**

[CLICK HERE FOR CUMULATIVE MEMBERSHIP DATA](#)

DECEASED	5
CLUB CANCELLED	0
OTHER	35
<b>TOTAL</b>	<b>40</b>

TOTAL FAMILY UNIT MEMBERS	57
FAMILY MEMBERS PAYING HALF DUES	29